

# INTELLICYBER

## CUSTOMER SUPPLIER PORTAL

## WRINGER

# Multi Enterprise Collaboration Products

## Mobile Warehouse

## IDX MHE Materials Handling

## IDX4 INTELLICYBER Development Exchange

## IDX RFID

A proud Member of: EPCglobal

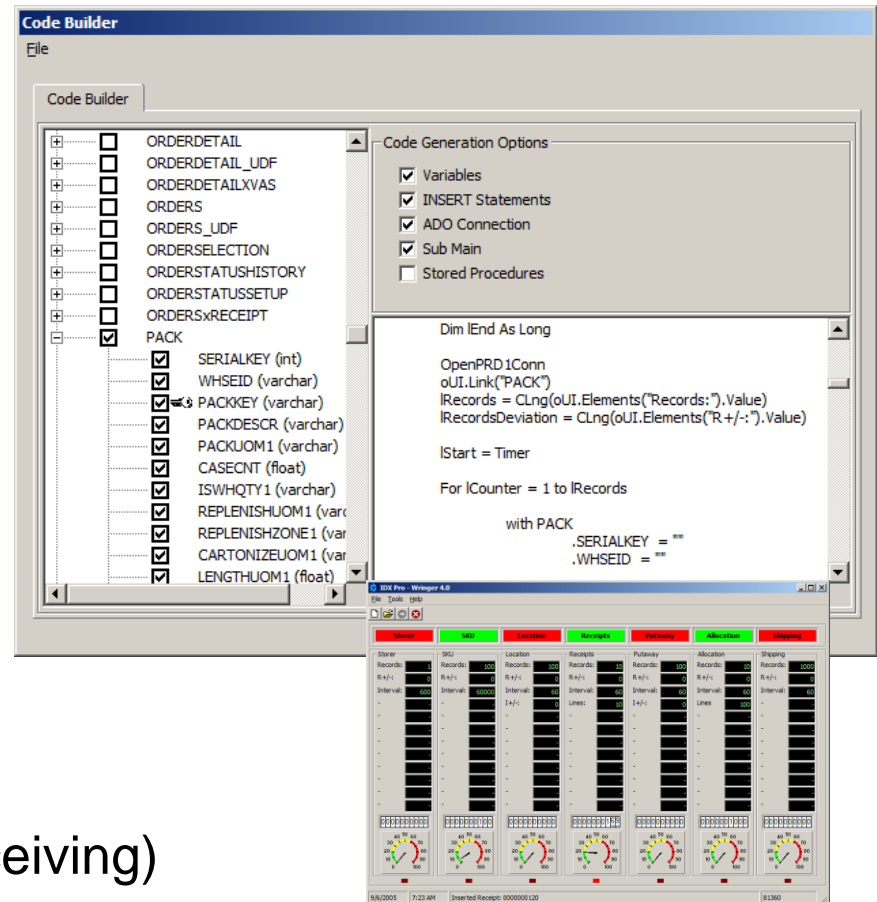
# Wringer Presentation

Chris Gregory

# IDX Wringer Introduction

## Stress Test / Benchmarking Utility

- Test Server requirements
  - sizing
  - Level of fail
  - Generate years of data
- Test efficiency of
  - Stored procedures
  - Interface macros
- Multiple macro types
  - Interfaces (i.e. documents, etc)
  - Called stored procedures (i.e. receiving)

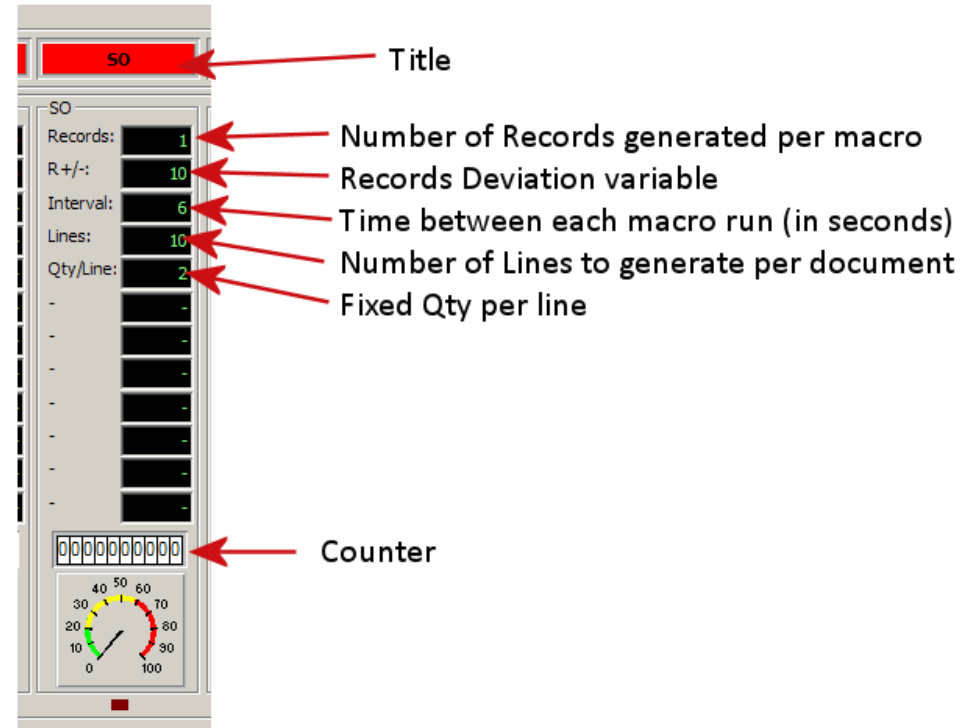


# What can Wringer do?

- Generate import files
  - XML, EDI, Text, direct DB inserts
  - Volumes configurable in settings
  - Lookups and real data usage
  - Error/fail rates can be set
  - Can be for documents (PO, ASN, SO, Loads, Waves, etc)
- Trigger application execution
  - Call API's
  - Call stored procedures and triggers
- Execution triggers outbound interface generation

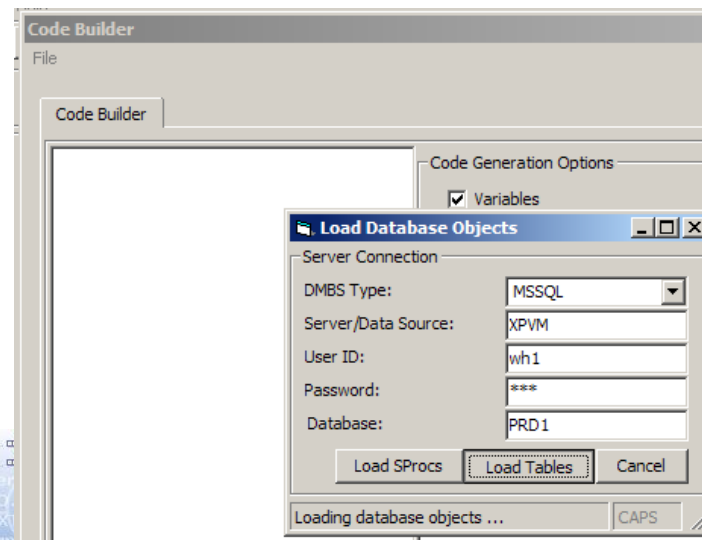
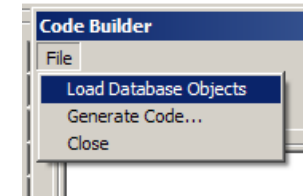
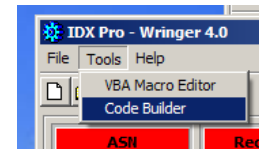
# Exploring Wringers UI

- Each parameter is defined by the UI Controller macro.
- They are changed via the macro, and are then used as variables in the separate macro files as required.



# Code Generator

- Wringer has a code generator to create the code defining variables, loops, etc
  - Tools – Code Builder
  - File – Load Database Objects
    - Put WMS DB details in the connection

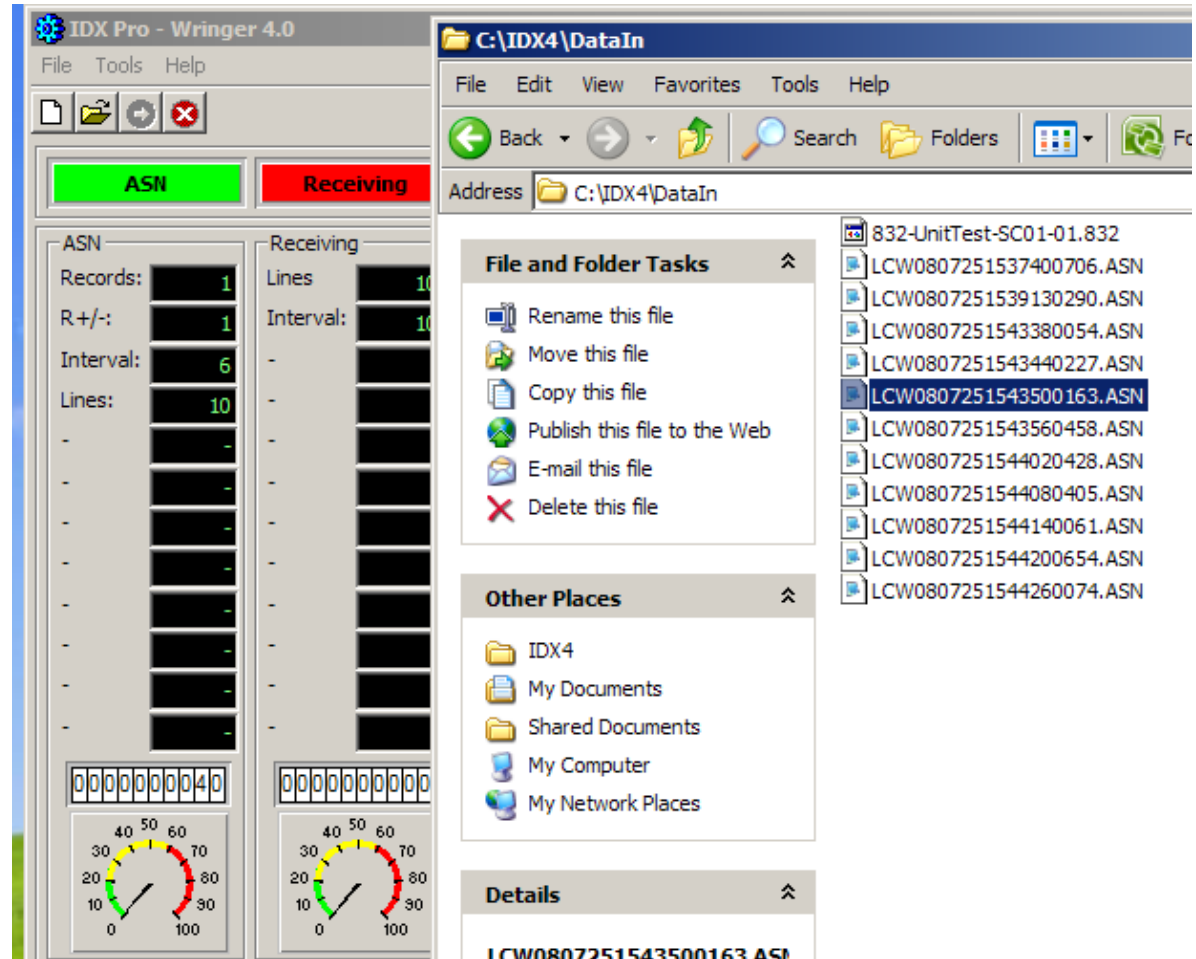


# Utilising WM Procedures

- For triggering internal WMS events like receiving, allocation, picking and shipping
  - Receiving
    - DB updates Received Qty = Expected Qty
  - Putaway
    - ExecuteForteProcedure "nspitrnaddmove"
  - Allocation
    - ExecuteForteProcedure "nspOrderProcessing"
  - Picking
    - DB updates Pickdetail to picked (status = 5)
  - Shipping
    - DB updates Pickdetail to shipped (status = 10)

# Example: How to run from Wringer

- Open Controller UI Macro.
- Click ASN to turn Green
- Click Green Run arrow
- Should continuously generate one asn file very xx seconds.
- Counter Shows number of lines generated



Intellicyber SQL Servers  
New IDX Project  
New IDX Process  
New IDX Interface  
New IDX Alert

Company  
Serial Reference  
Unassigned

Intellicyber  
New IDX Project  
New IDX Process  
New IDX Interface  
New IDX Alert  
Cybermetre

```
select O.OrderKey, O.ExternOrderKey, O.OrderDate, O.ConsigneeKey,  
O.Company, O.BuyerPO, O.IntermodalVehicle, O.Route, O.Transmethod,  
TCS' FROM ORDERS O, IDXTRANS I WHERE I.Trantype = 'MF9401N' and
```

```
Dim bIDX As clsIDX40  
Dim bDXTL As clsIDX40TransmitLog  
Dim bDXEL As clsIDX40ErrorLog  
fsNAS_RECLDdelimiter = " "  
DETAILRead() As Boolean >  
NAS_RECLWrite  
NAS_RECLWrite  
fsNAS_RECLIN.Number = 1  
fsNAS_RECLIN.Number = 1
```

Thank You