

INTELLICYBER

WRINGER

CUSTOMER SUPPLIER PORTAL

Multi Enterprise Collaboration Products

Mobile Warehouse

IDX MHE
Materials Handling

IDX4 INTELLICYBER
Development
Exchange

IDX RFID

A proud Member of: EPCglobal

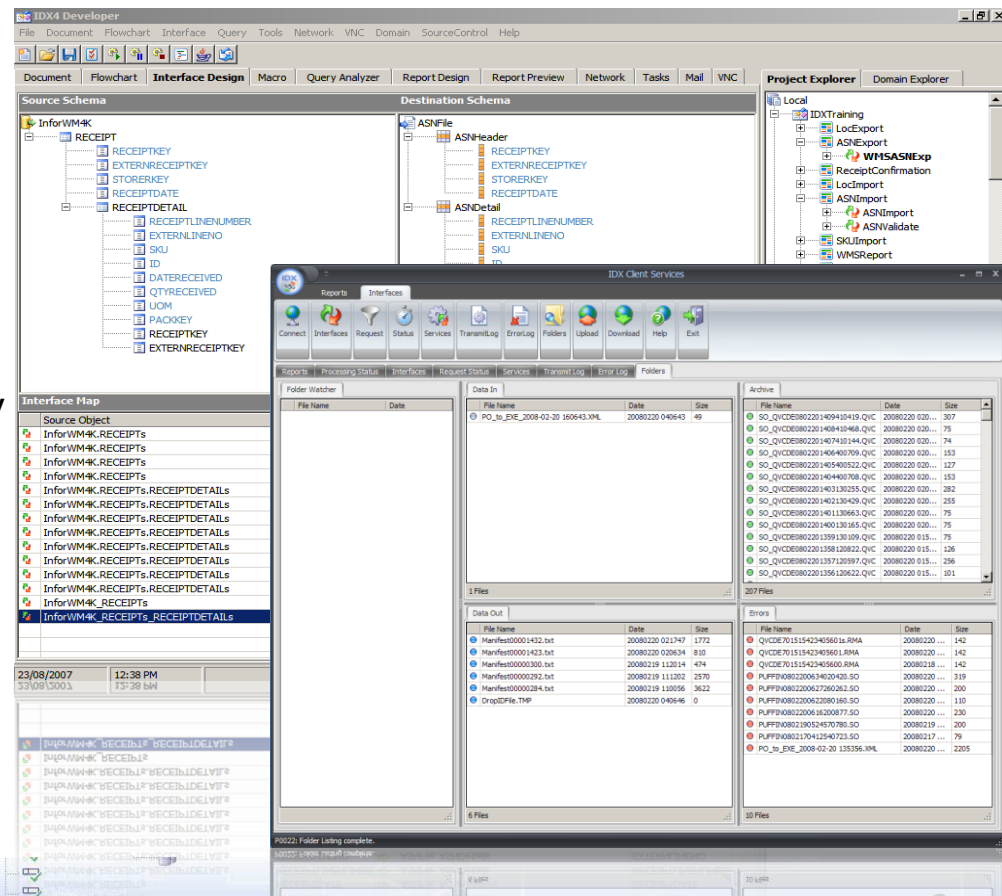
Cerqa – IDX Presentation and Demonstration
Chris Gregory - V.P. Sales and Marketing

Today's Agenda

- Brief Introduction
- IDX Demonstration
- Additional IDX components

The IDX Integration and Reporting Suite

- A Flexible set of tools that allow companies to manage, develop and deploy their own integration solutions
- Components include
 - Development tools
[IDX Developer]
 - Runtime engines
[IDX Manager & Services]
 - Web based monitoring and visibility
[IDX Client Services]
 - Performance / Volume Testing
[IDX Wringer]



IDX Developer

IDX4 Developer File Document Flowchart Interface Query Tools Network VNC Domain SourceControl Help

Document Flowchart **Interface Design** Macro Query Analyzer Report Design Report Preview Network Tasks Mail VNC

Source Schema

- Message
 - LNH
 - BGM
 - F1225
 - F4343
 - C002
 - F1001
 - F1131
 - F3055
 - F1000
 - C106
 - F1004
 - F1056
 - F1060
 - DTM
 - C507
 - F2005
 - F2380

Destination Schema

- E4KW
 - RECEIPT
 - RECEIPTKEY
 - EXTERNRECEIPTKEY
 - STORERKEY
 - RECEIPTDATE
 - POKEY
 - CARRIERNAME
 - RECEIPTDETAIL
 - RECEIPTKEY
 - RECEIPTLINENUMBER
 - EXTERNRECEIPTKEY
 - EXTERNLINENO
 - STORERKEY
 - POKEY
 - SKU
 - QTYEXPECTED
 - QTYRECEIVED
 - UOM

Project Explorer Domain Explorer

- PO
 - ASN
 - ASNXML
 - ASNTXT
 - RCONXT
 - RCONXML
 - SO
 - ADJ
 - SKU
 - EDIFACT
 - 97A_DESADV
 - DESADV
 - E4KW
 - VIS
 - 97A_DESTIM
 - R3
 - IDOC
 - SKU
 - E310E
 - MATMAS01
 - ASNIn

Interface Map

Source Object	Element	-->	Dest. Object	Element	Notes
VIS.Messages.DTMs.C507s	F2380	→	E4KW.RECEIPTS	RECEIPTDATE	
VIS.Messages.SG1s.RFFs.C506s	F1154	→	E4KW.RECEIPTS	POKEY	
VIS.Messages.SG1s.RFFs.C506s	{}	→	E4KW.RECEIPTS	{}	
VIS.Messages.BGMs.C106s	F1004	→	E4KW.RECEIPTS	EXTERNRECEIPTKEY	
VIS.Messages.BGMs.C106s	{}	→	E4KW.RECEIPTS	{}	
VIS.Messages.SG2s.NADs.C082s	F3039	→	E4KW.RECEIPTS	CARRIERNAME	
VIS.Messages.SG2s.NADs.C082s	{}	→	E4KW.RECEIPTS	{}	
VIS.Messages.SG10s.SG15s.LINs	F1082	→	E4KW.RECEIPTDETAILS	EXTERNLINENO	
VIS.Messages.SG10s.SG15s.LINs.C212s	F7140	→	E4KW.RECEIPTDETAILS	SKU	
VIS.Messages.SG10s.SG15s.QTYs.C186s	F6060	→	E4KW.RECEIPTDETAILS	QTYEXPECTED	
VIS.Messages.SG10s.SG15s.QTYs.C186s	{}	→	E4KW.RECEIPTDETAILS	{}	

Properties

MTYLogsOK

Name: DESADV

Status: {}

6/18/2009 11:55 AM CAPS NUM

e\18\5008 11:22 AM Cvb2 WFW

IDX Runtime Engines

The screenshot displays two windows from a Windows operating system. The top window is the 'Services (Local)' console, showing a list of services including 'IDXScheduler1', 'IDXScheduler2', and 'IIS Admin'. The bottom window is 'IDX Manager 3.4', which shows a detailed view of scheduled jobs.

Services (Local) - Scheduled Jobs

Job Name	Job Status	Scheduled Time	Last Run	Schedule	User
Inventory Report LOTxLOCxID	Completed		17-Jun-09 13:23:43	On Demand	Adminis
WMS Tally Sheet	Completed		17-Jun-09 13:22:05	On Demand	Adminis
Inbound Tally Sheet - Restrict...	Completed		08-Jun-09 14:11:51	On Demand	Adminis
Basic Inventory Report - Res...	Completed		08-Jun-09 12:55:58	On Demand	Adminis
			08-Jun-09 12:18:20	On Demand	Adminis

IDX Manager 3.4 - Job Scheduling

Job ID	Job Name	Schedule Name	Scheduled Time	Job Status	Last Run
1	Basic Inventory Report - Restricted by S	On Demand	00:00:00	Completed	
2	Inbound Tally Sheet - Restricted by ASN	On Demand	00:00:00	Completed	
3	Outbound Pick List - Restricted by SO#	On Demand	00:00:00	Completed	
4	Warehouse Utilisation KPI	On Demand	00:00:00	Completed	
5	Inventory Aging KPI	On Demand	00:00:00	Completed	
6	Inventory Movement Detail - Restricted I	On Demand	00:00:00	Completed	
7	Receipt Reconciliation Report	On Demand	00:00:00	Completed	
8	SKU Import Interface	5 Minutes	12:00:48	Scheduled	6/18/2009 11:55:48 AM
9	Customer Import Interface	On Demand	00:00:00	Completed	
10	GRN Confirmation	5 Minutes	12:00:44	Scheduled	6/18/2009 11:55:44 AM
11	SCN Confirmation	5 Minutes	12:00:53	Scheduled	6/18/2009 11:55:53 AM
12	ASN Import Interface	5 Minutes	12:00:40	Scheduled	6/18/2009 11:55:40 AM
14	PROM Standard ASN Import	1 Minute	14:12:35	Scheduled	6/8/2009 2:11:35 PM
15	PROM Receipt Confirmation - TEXT	1 Minute	14:12:31	Scheduled	6/8/2009 2:11:31 PM
16	PROM Standard SO Import	5 Minutes	12:00:50	Scheduled	6/18/2009 11:55:50 AM
17	PROM Shipment Confirmation - XML	1 Minute	11:56:49	Scheduled	6/18/2009 11:55:49 AM
18	Inventory Report LOTxLOCxID	On Demand	00:00:00	Completed	2/27/2009 9:14:33 PM
19	Inventory Report LOTxLOCxID	On Demand	00:00:00	Completed	2/27/2009 9:18:31 PM
20	Inventory Report LOTxLOCxID	On Demand	00:00:00	Completed	2/27/2009 9:22:12 PM
21	Inventory Report LOTxLOCxID	On Demand	00:00:00	Completed	2/27/2009 9:23:49 PM
22	Inventory Report LOTxLOCxID	On Demand	00:00:00	Completed	3/2/2009 5:42:24 AM
23	Inventory Report LOTxLOCxID	On Demand	00:00:00	Completed	3/2/2009 5:46:38 AM
24	Inventory Report LOTxLOCxID	On Demand	00:00:00	Completed	3/2/2009 5:54:44 AM
25	Basic Inventory Report - Restricted by S	On Demand	00:00:00	Completed	3/2/2009 5:56:48 AM
26	Inventory Report LOTxLOCxID	On Demand	00:00:00	Completed	3/2/2009 6:01:13 AM
27	Inventory Report LOTxLOCxID	On Demand	00:00:00	Completed	3/2/2009 6:03:13 AM

At the bottom of the IDX Manager window, the status bar shows: 6/18/2009 11:56 AM Job Scheduling Total number of records : 121 CAPS NUM

IDX Client Services

The screenshot displays the 'IDX Client Services' application window. The title bar indicates the application is running on 'http://localhost'. The interface includes a top navigation bar with 'Reports' and 'Interfaces' tabs. Below this is a toolbar with icons for 'Connect', 'Services', 'Start', 'Stop', 'TransmitLog', 'ErrorLog', 'Folders', 'Delete', 'Reprocess', 'Upload', 'Download', 'Help', and 'Exit'. A secondary toolbar contains tabs for 'Reports', 'Processing Status', 'Interfaces', 'Request Status', 'Services', 'Transmit Log', 'Error Log', and 'Folders'. The main area is a data table with the following columns: Interface, File Name, Status, Lines, Errors, Started, and Ended. The table lists 33 rows of data, all for the 'ASNTXT' interface, with various file names and status indicators (Success or Errors). At the bottom of the window, a status bar shows the date and time '20090618 11:53:26' and a message 'P0024: 533 Transmitlog entries listed.'.

Interface	File Name	Status	Lines	Errors	Started	Ended
ASNTXT	IDX0906171317339384.ASN	Errors	6	10	Wed 17-Jun-09 13:21:14	Wed 17-Jun-09 13:21:17
ASNTXT	IDX0906052101040876_a.ASN	Errors	8	12	Wed 17-Jun-09 13:21:03	Wed 17-Jun-09 13:21:14
ASNTXT	IDX0906171249130270.ASN	Success	10	0	Wed 17-Jun-09 13:16:00	Wed 17-Jun-09 13:16:03
ASNTXT	IDX0906171236550499.ASN	Success	2	0	Wed 17-Jun-09 13:15:59	Wed 17-Jun-09 13:16:00
ASNTXT	IDX0906171236470943.ASN	Success	5	0	Wed 17-Jun-09 13:15:57	Wed 17-Jun-09 13:15:59
ASNTXT	IDX0906171236340834.ASN	Success	4	0	Wed 17-Jun-09 13:15:57	Wed 17-Jun-09 13:15:57
ASNTXT	IDX0906171236230738.ASN	Success	7	0	Wed 17-Jun-09 13:15:46	Wed 17-Jun-09 13:15:56
ASNTXT	IDX0906171218180710.ASN	Success	4	0	Wed 17-Jun-09 12:20:21	Wed 17-Jun-09 12:20:22
ASNTXT	IDX0906171218110057.ASN	Success	10	0	Wed 17-Jun-09 12:20:20	Wed 17-Jun-09 12:20:21
ASNTXT	IDX0906171218040481.ASN	Success	3	0	Wed 17-Jun-09 12:20:20	Wed 17-Jun-09 12:20:20
ASNTXT	IDX0906171217580527.ASN	Success	2	0	Wed 17-Jun-09 12:20:19	Wed 17-Jun-09 12:20:20
ASNTXT	IDX0906171217500984.ASN	Success	6	0	Wed 17-Jun-09 12:20:19	Wed 17-Jun-09 12:20:19
ASNTXT	IDX0906171217430057.ASN	Success	2	0	Wed 17-Jun-09 12:20:19	Wed 17-Jun-09 12:20:19
ASNTXT	IDX0906171217370470.ASN	Success	2	0	Wed 17-Jun-09 12:20:19	Wed 17-Jun-09 12:20:19
ASNTXT	IDX0906171217290682.ASN	Success	2	0	Wed 17-Jun-09 12:20:18	Wed 17-Jun-09 12:20:19
ASNTXT	IDX0906171217220717.ASN	Success	4	0	Wed 17-Jun-09 12:20:18	Wed 17-Jun-09 12:20:18
ASNTXT	IDX0906171217160694.ASN	Success	10	0	Wed 17-Jun-09 12:20:18	Wed 17-Jun-09 12:20:18
ASNTXT	IDX0906171217080584.ASN	Success	4	0	Wed 17-Jun-09 12:20:17	Wed 17-Jun-09 12:20:18
ASNTXT	IDX0906171217010088.ASN	Success	8	0	Wed 17-Jun-09 12:20:17	Wed 17-Jun-09 12:20:17
ASNTXT	IDX0906171216550138.ASN	Success	8	0	Wed 17-Jun-09 12:20:17	Wed 17-Jun-09 12:20:17
ASNTXT	IDX0906171216470760.ASN	Success	7	0	Wed 17-Jun-09 12:20:16	Wed 17-Jun-09 12:20:16
ASNTXT	IDX0906171216400507.ASN	Success	3	0	Wed 17-Jun-09 12:20:16	Wed 17-Jun-09 12:20:16
ASNTXT	IDX0906171216340665.ASN	Success	9	0	Wed 17-Jun-09 12:20:15	Wed 17-Jun-09 12:20:16
ASNTXT	IDX0906171216270582.ASN	Success	9	0	Wed 17-Jun-09 12:20:15	Wed 17-Jun-09 12:20:15
ASNTXT	IDX0906171216210576.ASN	Success	5	0	Wed 17-Jun-09 12:20:15	Wed 17-Jun-09 12:20:15
ASNTXT	IDX0906171216130089.ASN	Success	3	0	Wed 17-Jun-09 12:20:15	Wed 17-Jun-09 12:20:15
ASNTXT	IDX0906171216060410.ASN	Success	8	0	Wed 17-Jun-09 12:20:14	Wed 17-Jun-09 12:20:15
ASNTXT	IDX0906171215590828.ASN	Success	9	0	Wed 17-Jun-09 12:20:14	Wed 17-Jun-09 12:20:14
ASNTXT	IDX0906171215530270.ASN	Success	7	0	Wed 17-Jun-09 12:20:13	Wed 17-Jun-09 12:20:14

The IDX Developer

- IDX Developer comes complete with adaptors for most file types and standards
 - Infor WM
 - XML
 - EDI (EDIFACT and X12) *
 - DB (MSSQL, Oracle, DB2 + More)
 - SAP *
 - Flat files – Any delimiter, CSV, etc (including comma replacing logic)
- Choose source and destination adaptors, define specific properties and logic required and IDX will generate code needed automatically.
- Inbuilt adaptors and connectors for the Infor WMS
- Transportation: Web Services, Message Queue, and FTP transportation

* Separate talking points in more detail to come

- **IDX Developer comes with inbuilt EDI adaptors**
 - All libraries provided with IDX
 - IDX adaptor to convert EDI file to fully documented XML file.
 - EDIFACT
 - 1993A – 2007B
 - Common 97A
 - X12
 - 3040 – 5030
 - Common 4010

• IDX Developer has built in SAP support

- Directly retrieve SAP Metadata
 - The IDX Domain Explorer gets all the IDOC definitions from the SAP server.
- Support for multiple methods if integration
 - IDOC
 - Support for “XML for IDOCs”
 - BAPI
 - RFC
 - Web Services

Properties	
Name	SPRAS
SEGMENTTYP	E1MAKTM
FIELDNAME	SPRAS
INTLEN	000001
EXTLEN	000001
FIELD_POS	000002
BYTE_FIRST	000067
BYTE_LAST	000067
ROLLNAME	SPRAS
DOMNAME	SPRAS
DATATYPE	LANG

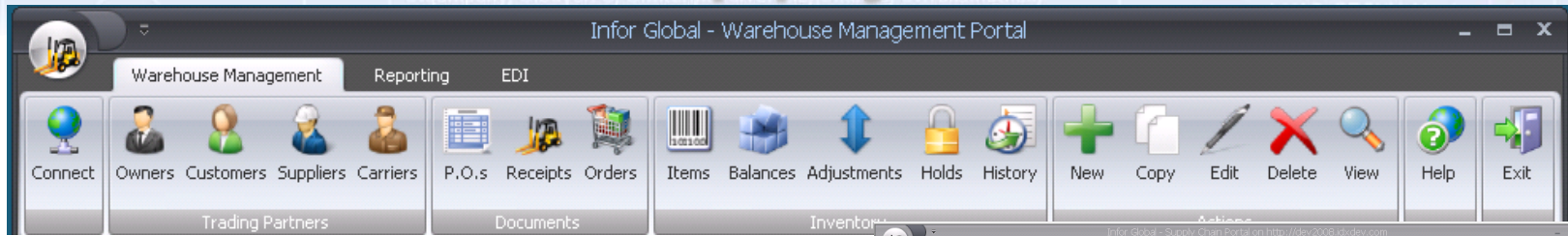
```

SPID0120071011151453.XML - Notepad
File Edit Format View Help
<?xml version="1.0" standalone="no"?>
<SDPIID01>
  <IDOC BEGIN="1">
    <EDI_DC40 SEGMENT="1">
      <IDOCYP>SDPIID01</IDOCYP>
      <NESTYP>SDPICK</NESTYP>
      <SNDPR>WMS</SNDPR>
      <SNDPRT>LS</SNDPRT>
      <SNDPRN>WMS</SNDPRN>
      <RCVPR>SAPZA</RCVPR>
      <RCVPRN>LS</RCVPRN>
      <RCVPRN>PHDPROD</RCVPRN>
    </EDI_DC40>
    <E1VPDLH SEGMENT="1">
      <VBELN_VL>0002155539</VBELN_VL>
      <VBELN>0000000012</VBELN>
      <KODAT>20071009</KODAT>
      <MABUC>X</MABUC>
      <MADAT IST>20071009</MADAT IST>
      <E1VPDLI SEGMENT="1">
        <VBELN_VL>0002155539</VBELN_VL>
        <POSNR_VL>000010</POSNR_VL>
        <VBELN>0000000012</VBELN>
        <POSNN>00001</POSNN>
        <PIKMG>3</PIKMG>
        <MEINS>EA</MEINS>
        <CHARG>BATCH</CHARG>
        <MATNR>000000000000067002</MATNR>
        <ORPOS>000010</ORPOS>
      </E1VPDLI>
    </E1VPDLH>
  </IDOC>
</SDPIID01>
    
```

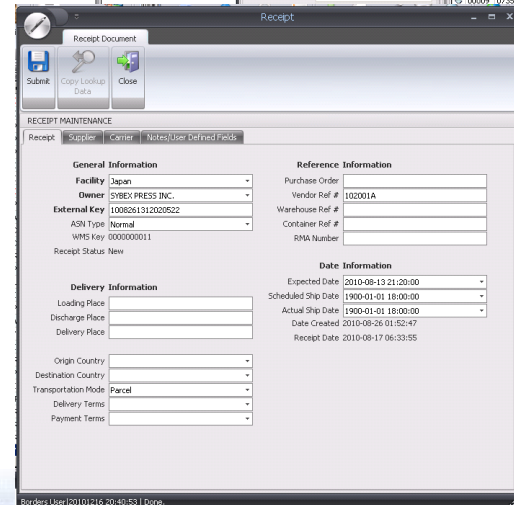
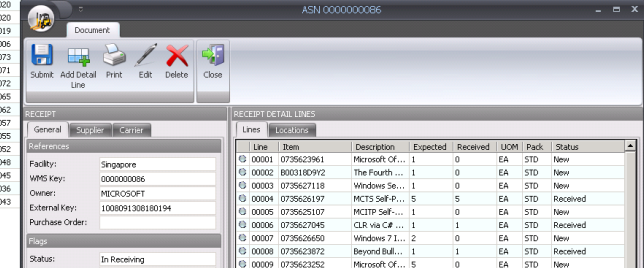
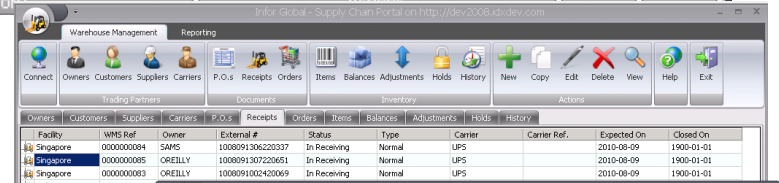
Core Products

- **IDX Integration application suite**
 - **IDX Enterprise Integration and Reporting tools**
 - **IDX4** – the IDX Developer, Integration Engine, Alerting, report writing, and tools
 - **IDX Client Services (ICS)** – Multi-entity web access to Interfaces, reports & KPI's
 - **Wringer** - Stress Testing, benchmarking and sizing
 - **Supply Chain Client Applications**
 - **IDX ATW** Asset and Sensor Tracking Workstation
 - **Mobile** - Warehouse PDA based WMS client
 - **Portals** - Web based access to Infor WM9 / WM4000/1000 WMS
 - **Automated Systems**
 - **IDX MHE** - Material Handling Equipment Integration
 - **IDX RFID** - Edgeware and tag logical integration

IDX Supply Chain Portal



- Internet enabled front end to warehouse data
- Designed for External Parties to access WMS data
 - Customizable Security Module
 - User Group view and logic
 - Suppliers, Customers, Owners, Carriers, etc
- On-line creation, viewing and management of data in WMS systems
 - Consolidated data from all warehouses
 - Master Data: Item, Customers, Suppliers, Carriers, etc
 - Inventory information: Balances, adjustments, holds, history
 - Document Status, management and creation (PO, ASN, SO)

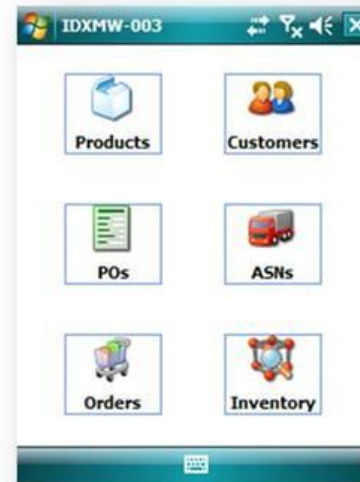


Mobile Warehouse

- Real-time document Management
 - Purchase Orders
 - ASN's
 - Shipment Orders
- On-line Inventory Balances and status
- Master information setup
 - Customers
 - Products (and packs)
- Use available network infrastructure – wi-fi or GPRS
- Supports Multiple Languages
- Windows Mobile™ clients



Order #	Due Date	Status
0000000091	04-Aug-09 15:57	Shipped
0000000090	04-Aug-09 13:33	New
0000000089	04-Aug-09 13:33	New
0000000088	04-Aug-09 13:32	In-Picking
0000000087	04-Aug-09 13:32	In-Picking
0000000086	04-Aug-09 13:32	Picked
0000000085	04-Aug-09 13:32	Picked
0000000084	04-Aug-09 13:31	Packed
0000000082	04-Aug-09 10:43	Shipped
0000000081	04-Aug-09 10:34	Shipped



#	Item
	4:00 PM

Description	Qty
852-1840 XPower Powerpack 300 Plus P 148	
2051 4-in-1 Extreme Power Jumpstart 22	
14200 20 Amp Aluminum Power Inlet Bo 171	
R3B12410 10-Foot 20 Amp Power Cord f 17	
501210 Powerstay 12-Circuit 50 Amp Tr 72	
30501A Parallel Power Kit for Honda EU 74	
Ring Flash with 18 Connecting Cord for t 113	
53002 Generator Cord Power Inlet Box f 74	
R3B10310 10-Foot 30 Amp Power Cord f 153	

Thank You

Functional Business Requirement

System (Release)	NEW	Date	February, 14 th 2005
Title	Carton Packing	Project	EA
FBR No. (Version)	SDVEA001	Client	SDV
Author	Chris Gregory	Last Update date	February, 18 th 2005
Approval		Approval date	

Description

This FBR provides the functional and technical details for the creation of a new application by SDV to record a carton number and details against an Exceed Shipment Order and ME. The purpose of this application is to replace the tedious manual job presently being done using Excel spreadsheets.

IDX Client Services

Job ID	Job Name	Report Filters	Status	Requested On
306	WMS Tally Sheet	ASN_NO=000000121	Completed	Tue 02-Mar-10 00:00:00
305	Admin - Interface Statistics KPI Report	Begin_Date=2010/03/01 00:00:00, End_Date=2010/03/03 00:00:00	Completed	Tue 02-Mar-10 00:00:00
304	TOVA Vendor Inventory Report	Vendor=GB7/Gigabyte	Completed	Tue 02-Mar-10 00:00:00
303	TOVA Customer Status Report	Customer=C490	Completed	Tue 02-Mar-10 00:00:00
302	Infor Customer Order IDX Trace Report		Completed	Tue 02-Mar-10 00:00:00
301	Infor EDI 945 vs 997 Reconciliation		Completed	Tue 02-Mar-10 00:00:00
300	WMS Tally Sheet		Completed	Tue 02-Mar-10 00:00:00
299	WMS Tally Sheet		Completed	Tue 02-Mar-10 00:00:00
298	WMS Tally Sheet		Completed	Tue 02-Mar-10 00:00:00
297	Infor EDI 945 vs 997 Reconciliation		Completed	Tue 02-Mar-10 00:00:00
296	Infor Customer Order IDX Trace Report		Completed	Tue 02-Mar-10 00:00:00
295	Infor EDI 945 vs 997 Reconciliation		Completed	Tue 02-Mar-10 00:00:00
294	Inventory Movement Detail - Restrict		Scheduled	Tue 02-Mar-10 00:00:00
293	WMS Tally Sheet		Completed	Tue 02-Mar-10 00:00:00
292	Admin - Interface Statistics KPI Report		Completed	Tue 02-Mar-10 00:00:00
291	TOVA Vendor Inventory Report		Completed	Tue 02-Mar-10 00:00:00
290	Offsite Storage Transfer Labels		Completed	Tue 02-Mar-10 00:00:00
289	TOVA Vendor Inventory Report		Completed	Tue 02-Mar-10 00:00:00
288	TOVA Customer Status Report		Completed	Tue 02-Mar-10 00:00:00
287	Infor Customer Order IDX Trace Report	Customer_Order=102912400706	Completed	Tue 02-Mar-10 00:00:00
286	Infor EDI 945 vs 997 Reconciliation		Completed	Tue 02-Mar-10 00:00:00
285	Infor EDI 945 vs 997 Reconciliation		Completed	Mon 01-Mar-10 00:00:00
284	Infor EDI 945 vs 997 Reconciliation		Completed	Mon 01-Mar-10 00:00:00
283	Infor EDI 945 vs 997 Reconciliation		Completed	Mon 01-Mar-10 00:00:00