

Intellicyber's Enterprise Integration and Application Tools

The IDX product suite provides Intellicyber's customers with cost effective, flexible and functional products that provide integration and visibility to data and systems in the Supply Chain.

Introduction

IDX is Intellicyber's range of tools and applications that are used to move, monitor, manage and disseminate data through the supply chain.

It includes developer tools to create and manage interface projects, management tools for deploying and controlling the services and schedulers running on IDX servers, as well as client tools that are used to manage and monitor servers via the internet.

These tools also include client applications that extend the SCM data out beyond the firewall to Customers, Suppliers and Owners in the supply Chain.

What is Intellicyber's IDX Enterprise Integration Suite?

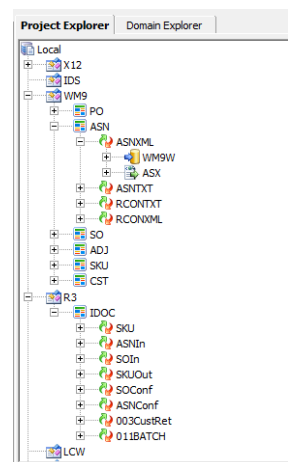
Intellicyber's IDX Suite comprises three primary product groups.

- **The IDX Developer (IDX4)** – The IDX Developer is used to define, create and test interfaces, alerts and reports on a developer machine. It includes additional tools and features that assist with the debugging and testing of the generated code.
- **IDX Runtime Engines** – The IDX Manager and Runtime tools are designed to deploy into the IDX Server. They include services and applications to run the interfaces, as well as a manager tool to configure security, schedules and setup other backend information.
- **IDX Client Services** – The ICS client is used to manage reports, interfaces and files across a LAN / WAN or internet. It can also be used by external parties such as Supplier and Customers due to its user security setup.

The IDX Developer

The IDX Developer (IDX4) is a development environment that allows companies to manage, develop and test their own integration solutions. With its inbuilt adaptors for SAP R3 and WMS integration, and native EDI, XML and flat file formats, it's designed around a concept of automatically generated transparent interface code.

Setting properties, parameters and other choices, IDX will build code and then using the inbuilt VB Integrated Development Environment (IDE) allow total flexibility for the users to develop solutions.



What IDX4 makes possible.

- Become self-sufficient with your supply chain integration requirements
- Automate current KPI, inventory, and order status reporting
- Enable true exception management for WMS, Transportation, Accounts, etc...
- Easily publish supply chain event management information from multiple sources
- Differentiate your services from competition with customer tailored macros using the powerful imbedded development environment

The IDX4 Development Environment

This is the main component of IDX that generates and builds each of the modules required for deployment into the IDX Server environment.

It is an integrated development environment which brings together all of the essential tools needed when creating processes and interfaces. It has a built in report writer, alerting writing tool, business process designer, document, task and e-mail repositories.

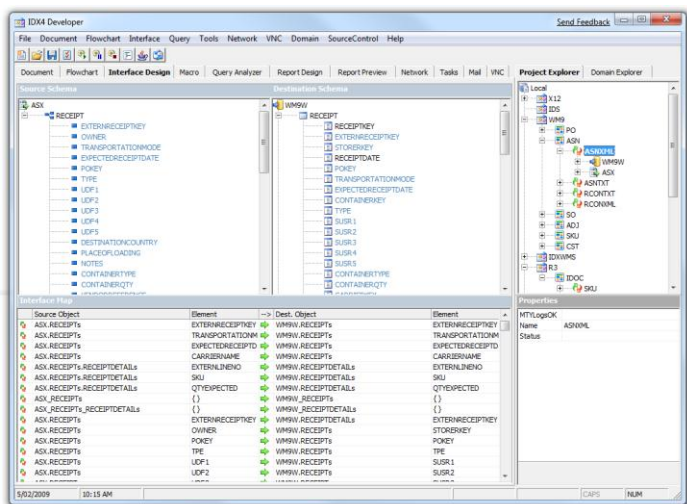
IDX4 includes an alerting module to allow for fully customizable exception, alerts and event management. These can be published through SMTP e-mail, Skype SMS or Skype Message. This alerting, combined with integrated crystal report writing and publishing tools, means that anyone in the supply chain can get the information automatically, and quickly.

The IDX4 Interface Developer

The interface developer is the tool used to create and develop code for interfaces, reports or alerts, which can then be deployed on IDX servers.

There are two main parts to the developer itself; the mapper and the integrated development environment.

The mapping tool allows for automatically generated code to be created by simply selecting the types of source and destination schemas to be used, and then mapping each column over to its desired location. Of course, this can be done all manually too, but the mapper takes a large part of the time consuming coding requirements.



Development Adaptors

Each interface is made up of its source or destination sources. These sources can be chosen from a set of adaptor types. These include Flat file (any delimiter), Database (MSSQL, Oracle, DB2), XML.

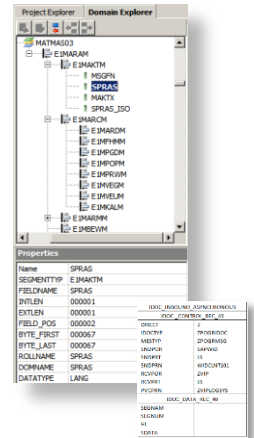
Adaptors also support different interfacing systems and formats

EDI: X12 ANSI and EDIFACT.

- All types of X12 and EDIFACT documents are supported, including the most common versions, 4010 and 97A.

SAP R3

- IDOC – Support for “XML formatted” and “structured text” IDOCS
- BAPI
- RFC (Remote Function Call) – Real time adaptor mechanism connects to internal SAP API's and BAPI's
- Web Services
- The SAP adaptor also contains connectors to retrieve metadata directly from the SAP ERP System, pulling down XML IDOC structure and information.

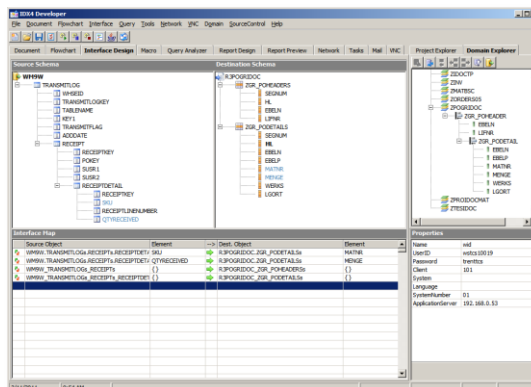
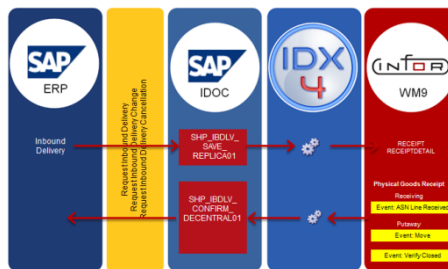


Infor WM

- Adaptor for both native API (WM9) and earlier version WM4000 (Socket Connections)

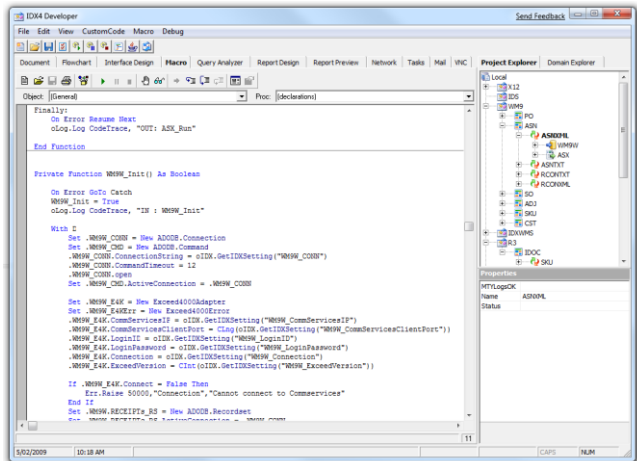
These adaptors make connecting to these systems much easier, automatically generating the code required.

Example SAP r3 IDOC to Infor WM9 Interface process.



Generating code

IDX Interface Developer makes generating the mapping and adaptor code simple and quick, but still allows logical arguments and other additional code to be added in the Integrated Development Environment (IDE). Custom code allows developers to write or amend any code to the macro, and allows the mapping schemas to change without the need to redo any changes or redo the interface. This is extremely important with product updates, where the interface development does not need to be redone, just simply add the new fields to the mapper, and the new code will automatically generate. The Development environment also has all the tools needed to reference external COM objects (such as the Intellicyber WM API's), debug, test and develop the code.



Alerting

The Interface developer includes Crystal Reports designer, allowing the developer to create any types of reports; either directly from the application database, or via an IDX data warehouse. These reports are controlled by VBA code making manipulating the data and reports control extremely easy.

For any business problem that can have a formula applied to it, an alert can be generated. This may be for a Supply Chain requirement, such as Low Stock, or delayed orders, or it may be for KPI's and high level management, such as Daily Receipt summaries, Daily balances, Location utilization, etc.

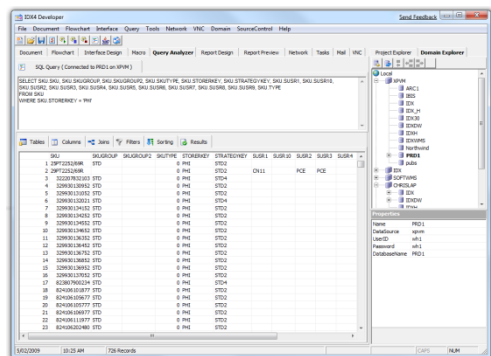
Alerts can also be used to track or manage the interfaces themselves, sending off alerts and notifications for interface failures, or perhaps where some case fails, like a SKU does not exist. Alerts can be built into the process builder at any point in the logic.

Publishing Alerts can be done in many ways. The most typical would be through the report creator and sent via an e-mail or the creation of an html file for a web page, or through a Skype IM or SMS.

Query Analyzer

The Query Analyzer is included to simplify the process of making and creating SQL queries. It can connect to any database, either MSSQL, Oracle or DB2 databases.

A single SQL statement can be run on any of these DB's, and it's integrated with the Interface Developer so that when stepping and debugging your code in the IDE, each SQL string sent to or received from the DB will be pasted to the window here.

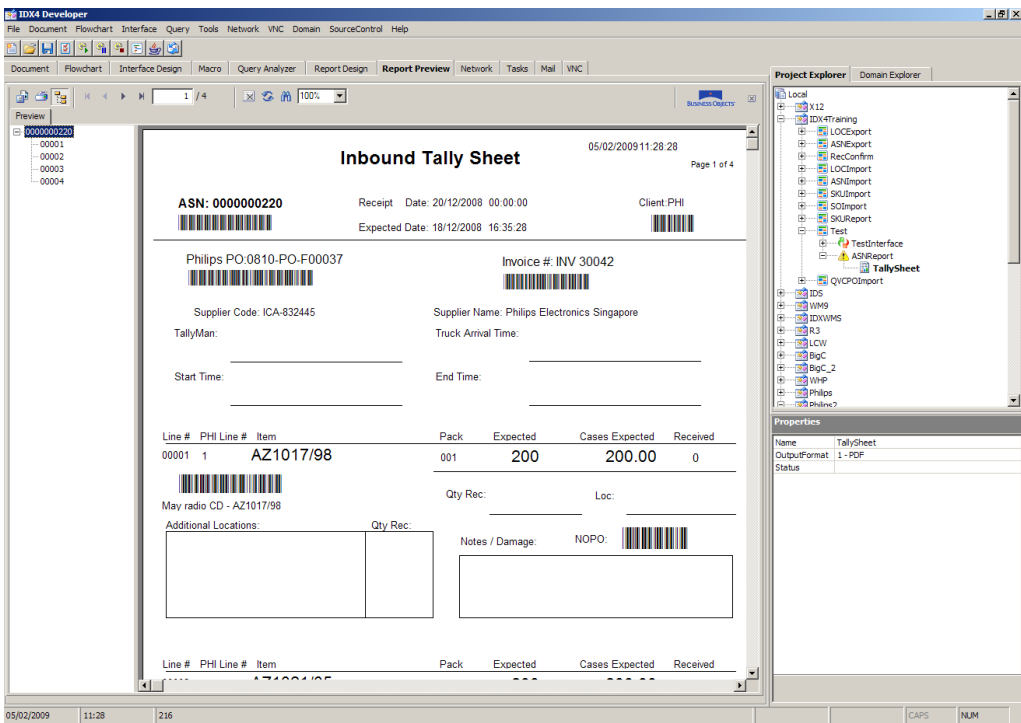


The Report Designer and publisher

IDX4 has Crystal report writer/designer built in. This allows users to create reports based on any factors or criteria needed.

The IDE environment is used to create the logic for the data used, and all of these fields can easily be positioned on the report through the GUI designer. Logos, subtotals, document information, document versions can all be added.

These documents can be previewed and tested and then deployed.



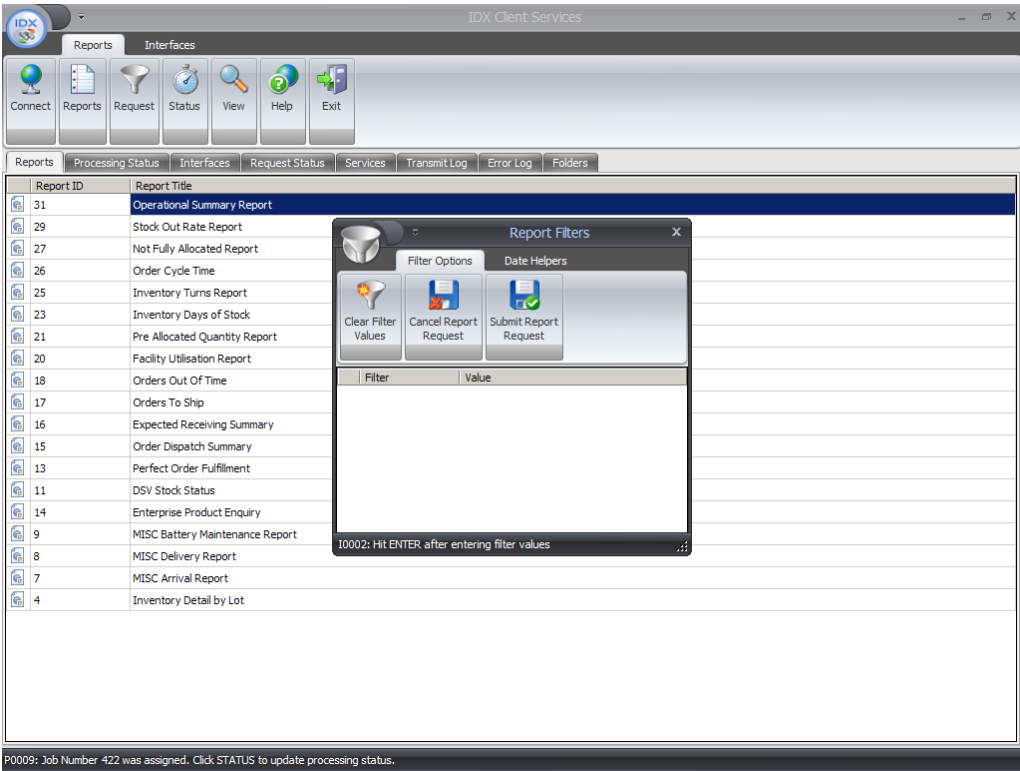
Alerts or events are also able to be created to be published and IDX can send these documents to appropriate parties, which can be determined by the user defined logic. Document Scheduling can be set up to push reports out at intervals (i.e. every morning at 9am) or when an action/event occurs (then it becomes an Alert!).

IDX Client Services

ICS is tool which enhances the experience of the IDX Integration and Alerting toolset, and can be used to leverage visibility, execution and support across the internet.

Remotely Interact with IDX

ICS is a multi-entity application designed to allow different parties access to data via an IDX Runtime environment. These users can be vendors, suppliers, consignees, carriers, etc as well as owners of goods in the supply chain. Perfect for solutions such as VMI where multiple parties need visibility of data. A security application gives these entities the permissions and management needed to enable this.



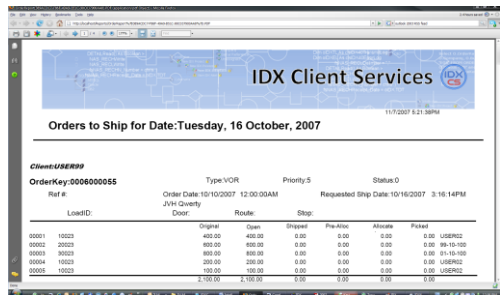
ICS allows administrators and users to interact with IDX servers across multiple networks, all connected through an internet connection. This may be to monitor the status of the integration servers, run an interface on demand, or may be run and view reports created by crystal reports in the IDX4 developer. In fact, Intellicyber can provide customers with Starter Kits of KPI reports and alerts designed around the Intellicyber WM, from operational planning reports through to complex DIFOT calculations.

ICS also enables managers and supervisors to view and interact with IDX4 runtime environment to monitor interface logs, history and errors, as well as access the data files used in the interfaces themselves.

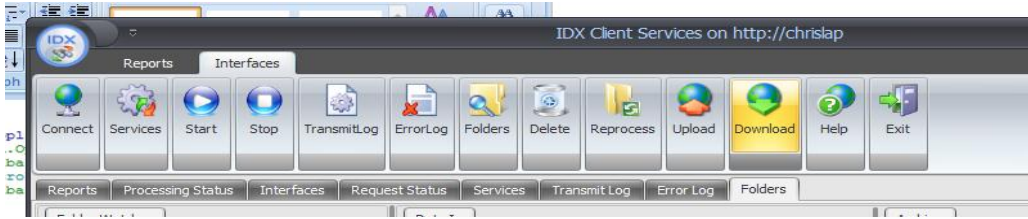
Reporting Tool

Access any report created through the Crystal Reports designer in the IDX4 Developer. Reports may be run on demand and previewed, and may be printed directly, or e-mailed automatically to destination parties. Examples of this would be daily inventory reports to customers, automated invoicing, or daily/weekly type KPI reports.

Inherent security can be applied to the reports so that filters and restrictions are applied to users and groups, in that way: owners, vendors and customers through to warehouse staff, can access only the data they *should* see.



Interface Management



Once connected to an IDX4 server, the ICS client will allow users visibility onto all interfaces that are running, their status, and when they are next scheduled to run. Interfaces can also be started or stopped remotely. All of the main data 'drop' directories are also available, with the contents able to be view and updated. Files can be downloaded or uploaded into these directories from the client. Coupled with visibility of interface history, and the ability to view error logs, this allows users to remotely access the data files, correct it of any errors, and run the interface again.

A screenshot of the "Interfaces" tab in the IDX Client Services application. It displays a table with the following columns: Computer, Scheduler, Interface, Status, Next Run, Last Run, and Schedule. The table contains several rows of interface data.

Computer	Scheduler	Interface	Status	Next Run	Last Run	Schedule
UKFRNFSHA...	1	Receipt Confirmation - FIAT	Scheduled	Fri 18-Apr-08 18:35:01	Fri 18-Apr-08 18:34:56	5 Seconds
UKFRNFSHA...	1	ASN Import - COU1	Stopped	Fri 18-Apr-08 18:35:55	Fri 18-Apr-08 18:34:55	60 Seconds
chrislap	2	Inventory Balance Report	Scheduled	Tue 29-Apr-08 09:00:00	Mon 28-Apr-08 17:17:56	Daily 9 AM
chrislap	2	Interface Metric	Completed	Thu 01-Jan-99 00:00:00	Mon 07-Apr-08 13:58:40	On Demand
chrislap	2	ASN Enquiry Report	Completed	Thu 01-Jan-99 00:00:00	Thu 20-Mar-08 09:39:09	On Demand
chrislap	2	Inventory Balance Report	Completed	Thu 01-Jan-99 00:00:00	Mon 28-Apr-08 17:18:53	On Demand
chrislap	1	Receipt Confirmation - FIAT	Scheduled	Fri 18-Apr-08 18:35:01	Fri 18-Apr-08 18:34:56	5 Seconds
chrislap	1	ASN Import - COU1	Stopped	Fri 18-Apr-08 18:35:55	Fri 18-Apr-08 18:34:55	60 Seconds

About Intellicyber Ltd

Intellicyber Ltd has been developing software products designed to address supply chain data integration needs since 1999. Intellicyber combines supply chain domain expertise and technical innovation delivering superior solutions to customers around the world.

The Company operates a network of offices and partner locations around the world. For more information, please contact the Intellicyber headquarters below.

+ 65 6441 6609

www.intellicyber.com